

SPECIFICATIONS:

- FREQUENCY: 0.5 GHz TO 18 GHz
- INSERTION LOSS: REFLECTIVE: 5.0db
ABSORPTIVE: 5.5db
- ISOLATION: 0.5 GHz TO 2 GHz: 60db
2 GHz TO 18 GHz: 70db
- VSWR: REFLECTIVE IN/OUT: 2.0:1
ABSORPTIVE IN/OUT: 2.0:1
ABSORPTIVE OUT/OFF: 2.0:1
- SPEED: RISE: 10ns TYPICAL, 15ns MAX.
FALL: 10ns TYPICAL, 15ns MAX.
DELAY ON: 75ns TYPICAL, 150ns MAX.
DELAY OFF: 75ns TYPICAL, 150ns MAX.
- POWER INPUT: (CW)+20dBm (STANDARD), +10 dBm (HIGH SPEED)
- SURVIVAL POWER: 1 WATT CW, 10 WATTS PEAK 1 usec
- CONTROL: TTL LOGIC "0"-ON "1"-OFF
- POWER SUPPLY: +5V @ 600 mA MAX.
-5V @ 150mA MAX.(RELECTIVE)
200mA MAX.(ABSORPTIVE/NON-REFLECTIVE)

OPTIONS:

INDEPENDENT CONTROL WITH SOLDER PIN STANDARD

- DEC-MP: 5 BIT DECODER WITH MULTIPIN
- DEC-SP: 5 BIT DECODER WITH SOLDER PIN
- MP-IND: INDEPENDENT CONTROL WITH MULTIPIN
- 10M10: 10 MHz TO 18 GHz (INSERTION LOSS INCREASES BY 1.5db AT 10 MHz AND 0.5db AT 18 GHz)
- 100M18: 100 MHz TO 18 GHz (INSERTION LOSS INCREASES BY 1.5db AT 100 MHz AND 0.5db AT 18 GHz)
- 118: 1 GHz TO 18 GHz (NO CHANGE IN INSERTION LOSS)
- 218: 2 GHz TO 18 GHz (NO CHANGE IN INSERTION LOSS)
- 412: 4 GHz TO 12.4 GHz (NO CHANGE IN INSERTION LOSS)
- 818: 8 GHz TO 18 GHz (NO CHANGE IN INSERTION LOSS)
- 1218: 12 GHz TO 18 GHz (NO CHANGE IN INSERTION LOSS)
- 100M20: 100 MHz TO 20 GHz (INSERTION LOSS INCREASES BY 1.5db AT 100 MHz AND 1.0db AT 20 GHz)
- 220: 2 GHz TO 20 GHz (INSERTION LOSS INCREASES BY 1.0db AT 20 GHz)
- 1020: 10 GHz TO 20 GHz (INSERTION LOSS INCREASES BY 1.0db AT 20 GHz)
- B01: -12V POWER SUPPLIES
- B02: -15V POWER SUPPLIES
- B03: REVERSE LOGIC "1"-ON "0"-OFF
- B04: DRIVERLESS, CURRENT CONTROLLED
- B05: HIGH SPEED, TURNON/TURNOFF 25 nsec MAXIMUM WHEN APPLICABLE
- B08: HIGH POWER - SPECIFY CW POWER, PEAK POWER, PULSE WIDTH, DUTY CYCLE, RF FREQUENCY AND BANDWIDTH
- B07: CUSTOM DESIGNED PRODUCT- SPECIFY INITIALS OF CUSTOMER
- B08: LOW VIDEO TRANSIENTS - SPECIFY VIDEO BANDWIDTH
- B09: LOW INSERTION LOSS VERSION
- B10: HIGHER ISOLATION VERSION

9-1

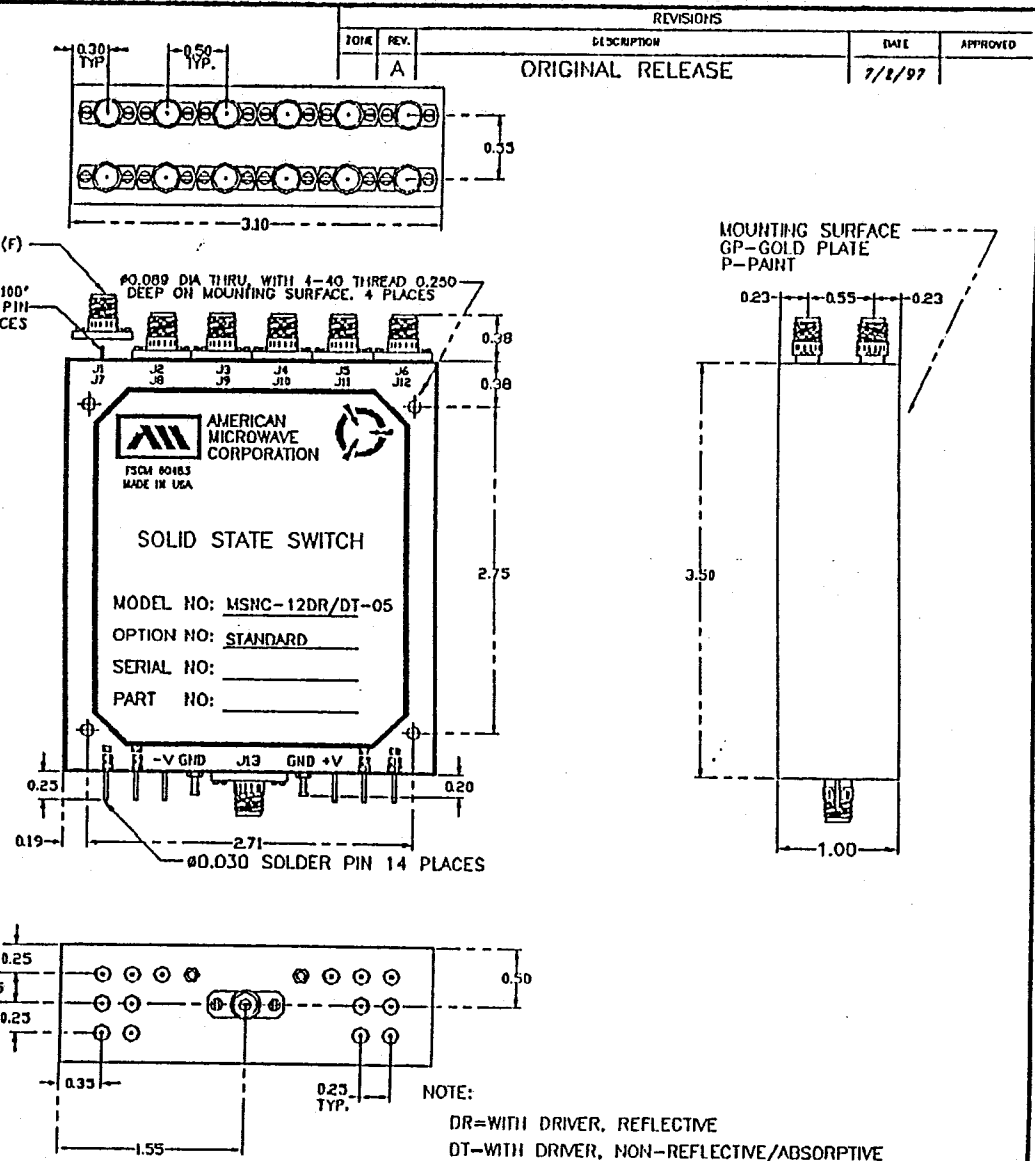
ENVIRONMENTAL RATINGS:

- TEMPERATURE: -55°C TO +85°C (OPERATING)
-65°C TO +125°C (STORAGE)
- HUMIDITY: MIL-STD-202F, METHOD 103B COND. B
- SHOCK: MIL-STD-202F, METHOD 213B COND. B
- VIBRATION: MIL-STD-202F, METHOD 204D COND. B
- ALTITUDE: MIL-STD-202F, METHOD 105C COND. B
- TEMPERATURE CYCLE: MIL-STD-202F, METHOD 107D COND. A

NOTE: THE ABOVE SPECIFICATIONS ARE SUBJECT TO CHANGE OR REVISION

ALL DIMENSIONS ARE IN INCHES
TOLERANCES:

- X.XX ±0.020
- X.XXX ±0.010



APPROVALS		DATE	REVISIONS	
DESIGNED	W/S	7/12/97	DESCRIPTION	ORIGINAL RELEASE
DRAWN			DATE	7/1/97
CHECKED			APPROVED	
REVISED				
PART NO.			AMERICAN MICROWAVE CORPORATION FREDERICK, MARYLAND	
TITLE			OUTLINE DRAWING	
MSNC-12DR/DT-05-STANDARD			REFLECTIVE OR NON-REFLECTIVE/ABSORPTIVE SOLID STATE SWITCH	
SIZE	ISOM NO.	DWG NO.	REV.	
A	60483	100-4162-1	A	
SCALE	N/S	SHEET	1 of 1	